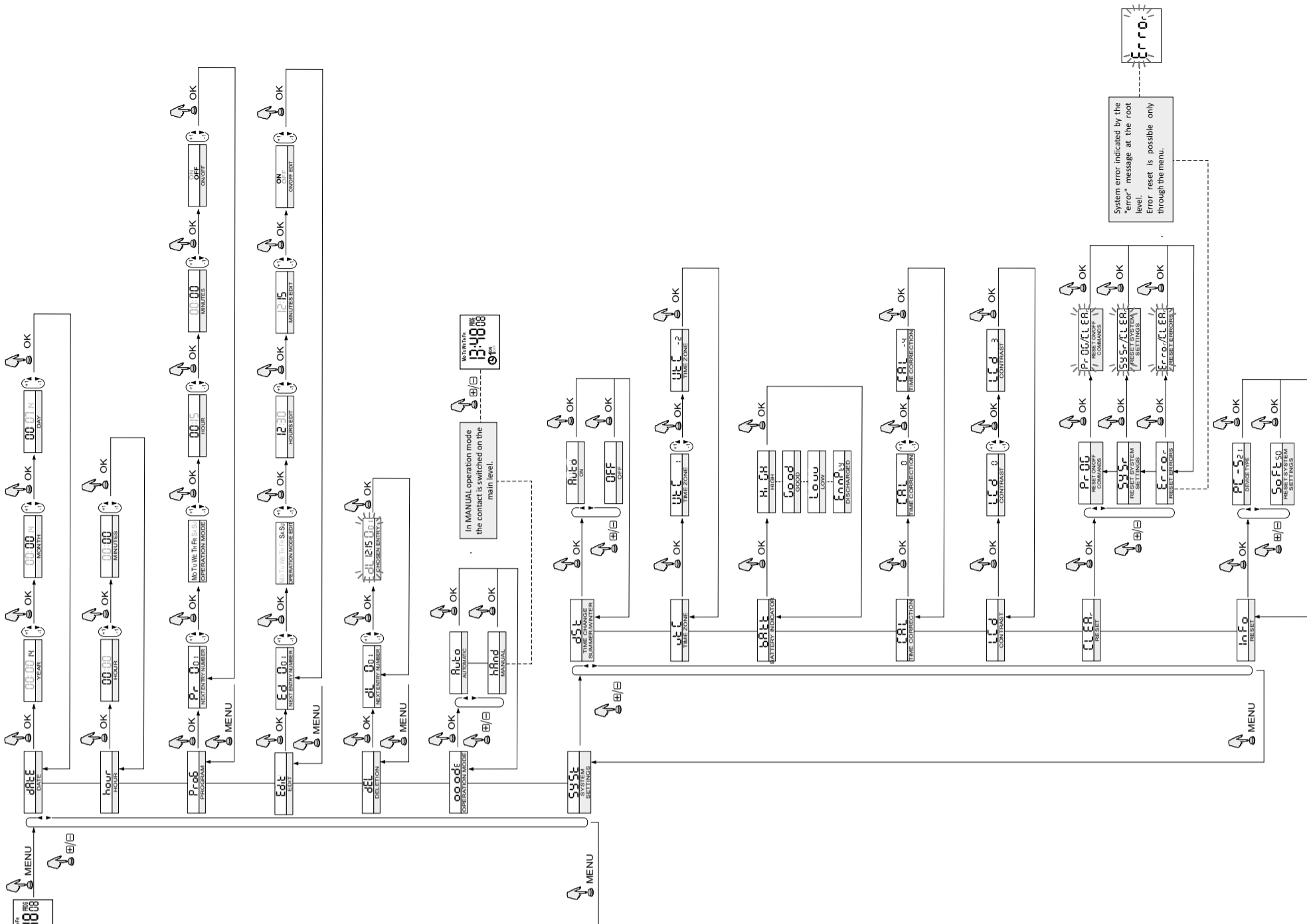
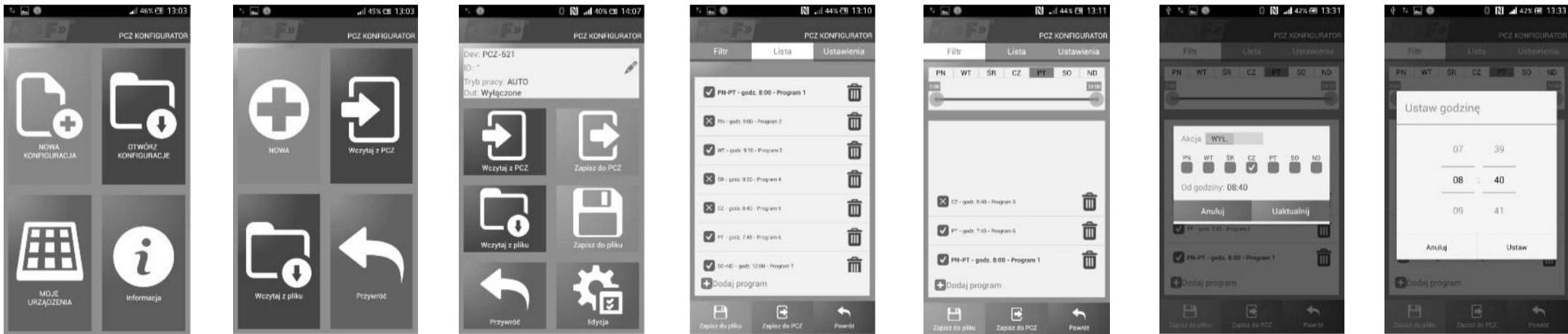


Programming scheme



Configurator PCZ App



Main window

- 1) New configuration – opens window for creation of a new controller configuration.
- 2) Open configuration- opens window for loading the program configuration stored as a file in the phone memory.
- 3) My device - gives access and support for all backup copies of configurations assigned to specific devices.
- 4) Information – application user guide

New configuration

- 1) New – creates new, empty configuration file (without any programs).
- 2) Load from PC – new configuration is created based on a program saved in the PCZ controller.
- 3) Load from file - new configuration is created based on a files saved by the user. Opens a window with a list of files previously saved by the user.
- 4) Restore - a new configuration is created based on a backup copy of one of the previous configuration. Tapping this icon opens window with a list of backups split into controllers in which they were written. Select a new configuration option opens another window.

The function window allows to edit program as well as to load and save configuration to a PCZ controller. It appears automatically when we bring the phone closer to the controller, or when we create a new configuration. In the upper part of the screen the application displays a frame with following information:

Dev – supported controller type ID – unique identifier of connected controller (appears only when the application is connected with the controller. In the Offline mode that field remains empty). Icon of a pencil on the right-hand side allows you to enter your own name for the controller.

Operating mode – displays the current operating mode for the controller (manual or automatic). Applies only to operating in Online Out mode – Output relay status (enabled or disabled). Applies only in Online mode.

- Keys:
- 1) Read the timer configuration.
 - 2) Save the current configuration to the timer.
 - 3) Load configuration from file.
 - 4) Save the current configuration to file.
 - 5) Restore configuration from backup copies.
 - 6) Edit the current configuration.

Edit

Editing window allows you to edit current configuration (new, loaded from file or from PCZ)

Editing window consists of three tabs:

- 1) List - a list of all programs (in the order in which they are stored in the memory).
- 2) Filter - a list of programs that will be executed on the selected day (in chronological order by program execution).
- 3) Settings – system settings configuration.

List

Main part of the screen is taken by the list of PCZ programs. Programs are displayed sorted by the time they are written in the controller memory. Each program is symbolized by:

- action icon - the green "v" means that the specific program will activate relay. Red "x" means deactivation of relay.
- Date and time – show days of programs activation and their start time.
- Program number - program position in the controller memory. Bold font marking represents a program that is (or should be) executed. Pressing the trash bin icon next to the program entry deletes program. To add a new program select "Add Program". To edit an existing program tap into the edited program.

The three icons at the bottom of the screen allow you to:

- Save to file - saves the current configuration to a file.
- Save to PCZ - saves the configuration to a timer.
- Back - returns to the function window. Upon returning to the function window, current configuration is stored in application memory.

Filter

Filter tab performs a similar function to List. In this case, at the top of the screen appears addition frame for choosing the day and time interval for which the application displays a list of programs active during that time. Programs are displayed in chronological order, sorted by the time of their actual execution.

Adding and editing programs

- Add or edit program displays a window with following options:
- Operation – selects whether the program will turn the relay on or off.
- Day – selects the days of program execution. You can select a single day, Monday - Friday, Saturday - Sunday, all week.
- Time – selects the time of program execution.

Application available on:



<https://play.google.com/store/apps/details?id=pl.com.fif.clockprogramer>